



Technical Rider

(+ Lights/video pg.4 - Hospitality pg.6)

Las Añez are:

1. Valentina Añez: voice, looper and keyboard.
2. Juanita Añez: voice, looper, cuatro and percussion.

Input List

CH	Instrument	Microphone	Stand
1	Looper L	XLR	Boom
2	Looper R	XLR	Boom
3	Juanita (Left)	SM58	Boom
4	Valentina (Right)	SM58	Boom
5	Keyboard L	DI	-
6	Keyboard R	DI	-
7	Percussion (Center)	SM57	Boom
8	Percussion (Left)	SM57	Boom
9	Cuatro	DI	-
10	FX Generator	DI	-
11	Click	DI	-
12	-	-	-
13	Playback L (FOH)	DI	-
14	Playback R (FOH)	DI	-
15	Timeline L (FOH)	DI	-
16	Timeline R (FOH)	DI	-
17	Spare 1	SM57	Boom
18	Spare 2	DI	-
19	-	-	-
20	Stage	SM58 Wireless	-
21	Talk Back (FOH)	E825-S	Boom

Notes:

- The looper's input is feeded with two microphones (Shure SM58) **provided** by the artists, that's why we ask for boom mic stands with mic holders for these channels.
- Channels 13-15 and 21 are placed on F.O.H position.
- Please avoid wireless mics on other channels than CH-20.

Output List

CH	Mix	Position
1	Center L	Wedge Center
2	Center R	Wedge Center
3	Juanita	Wedge L
4	Valentina	Wedge R
5		
6	Juanita IEM	Juanita
7		
8	Valentina IEM	Valentina
9		
10	Stage IEM	Stage
11	Timeline	FOH

FOH Specs (House Mixing)

- Array or staked system with appropriate characteristics to the space and with the appropriate adjustments to give a coherent and homogeneous coverage to the audience.
- Please consider having front-fills correctly adjusted with the main PA, out-fills, etc.
- A digital mixer with at least 24 input channels and 6 output channels for monitor sends, in case the monitor work needs to be done on the same F.O.H mixer.
Preferred Mixers: Digico SD series or Quantum series, Yamaha DM7, CL5 or Rivage series, Venue SC-48, Midas M32.

Monitor Specs

- 3 Independent IEM stereo mixes. *Sennheiser ew300 IEM G4 or G3, Shure PSM 300.*
- 4 wedge monitors placed as indicated in the stage plot.

Backline

- (1) keyboard stand to play standing - HIGH PRIORITY
- (1) cuatro stand. An acoustic guitar hanging stand will work fine.
- (1) percussion table.
- (2) 110 V @ 60Hz electric outlets, for looper and keyboard disposed as indicated in the stage plot.
- (2) 110 V @ 60Hz electric outlets on F.O.H position.

It's very important that the sound system and backline are in optimal condition.

Please let us know any concerns or suggestions via the contact email.

Support Personnel Requirements

Two people are needed who know the equipment provided well and who are present from assembly until the last moment the equipment is dismantled; to perform the duties of console assistant and stage assistant, respectively.

In case the monitor mixing will perform from an independent console, the production must provide a monitor engineer for the task.

Schedule

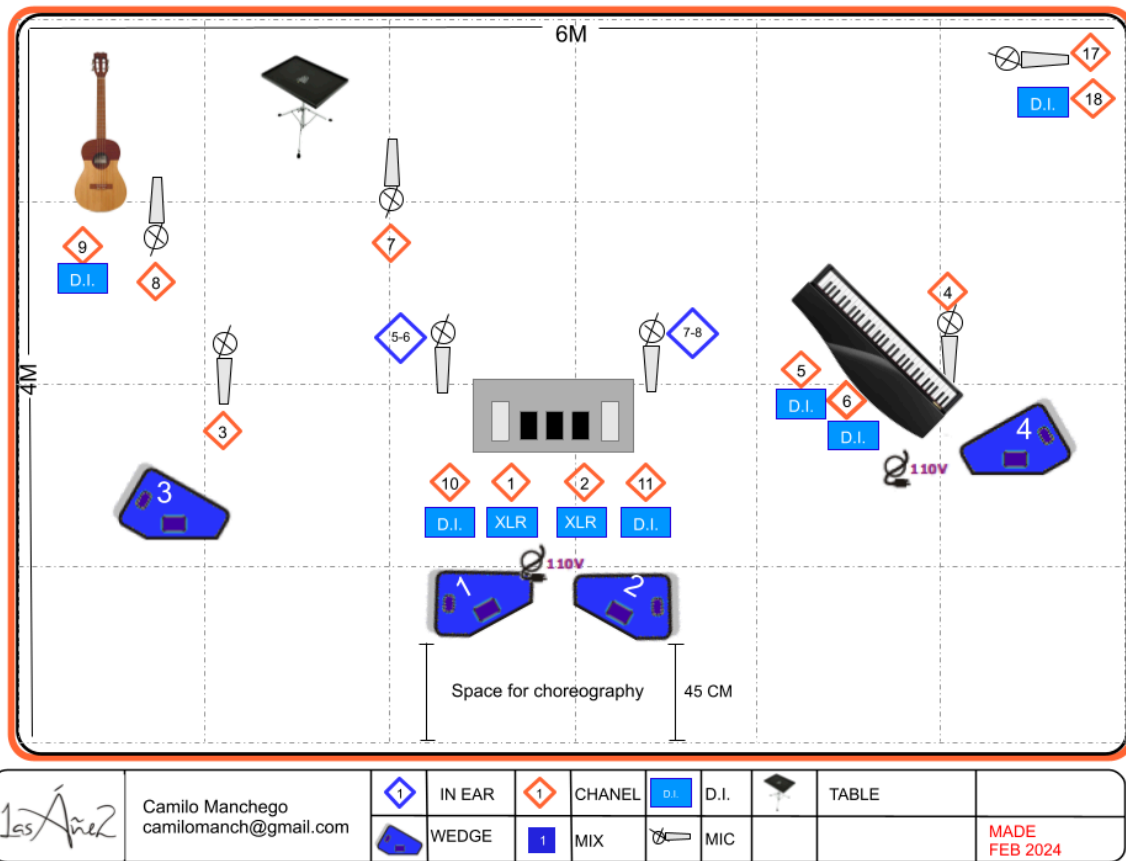
- 60 minute stage setup
- 60 minute sound check, once all the equipment is ready as well as all lines checked.

Sound Contact

Camilo Manchego - F.O.H Mixer

email: camilomanch@gmail.com

LAS AÑEZ - STAGE PLOT



Visual Technical Rider

Video:

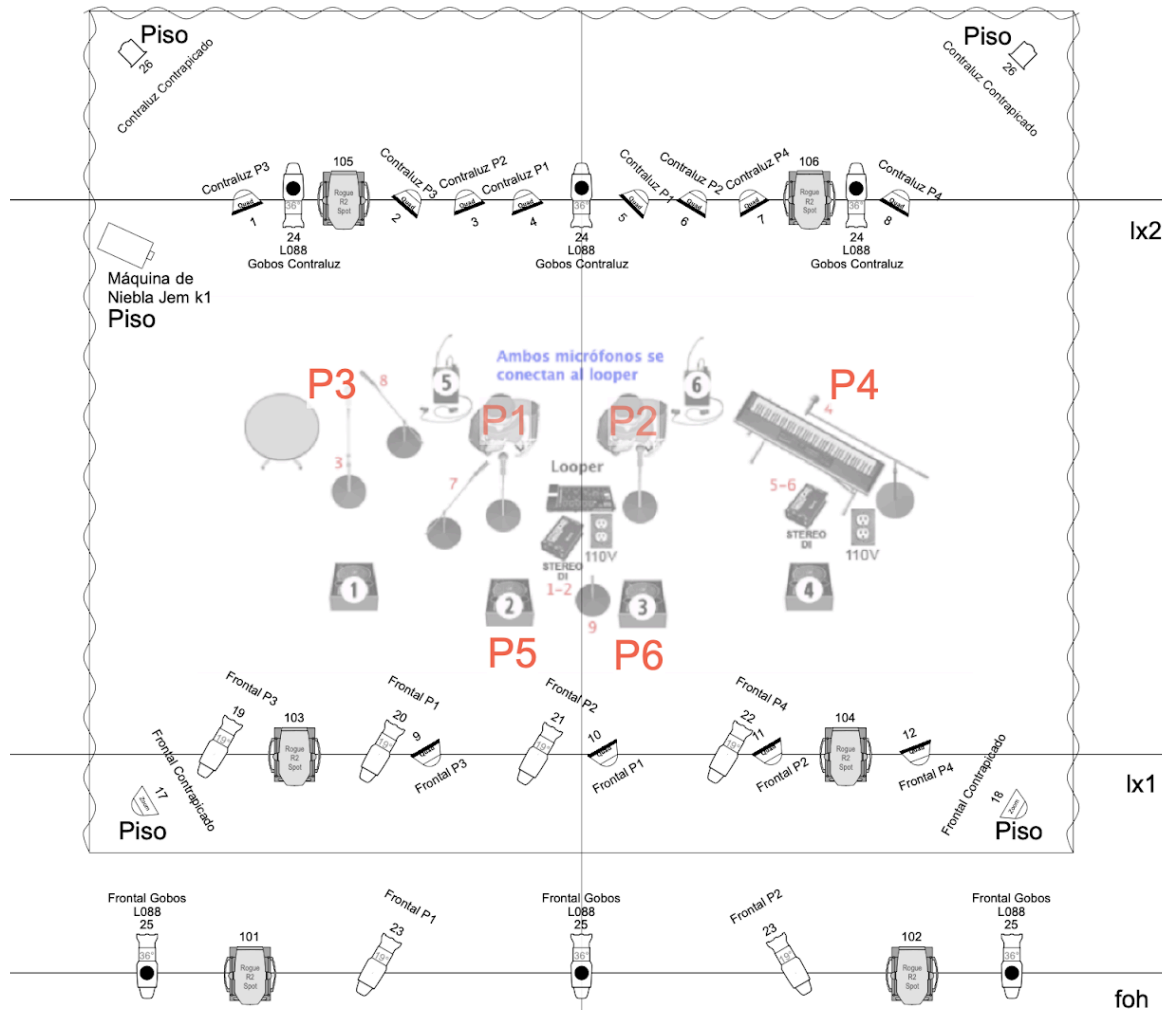
Please notify if there will be a screening and inform the video person of the event that: A visual file is carried on a USB, which once played, runs from the beginning to the end of the show. It can be sent in advance if necessary.

Lights:

Please send lighting technical contact no later than two weeks before the event. Adjust the stage lighting equipment to the following complete pilot, as far as possible:

If you do not have our illuminator, please try to lower the light by 90% at the end of each song and take into account the following shot if possible:

Lighting Stage Plot:



LAS ÁÑEZ
 Planta de Iluminación Escénica
 Versión 2A Marzo 30 de 2017
 Diseño de Iluminación: Humberto Hernández A.
www.humbertohermandeza.com

Notas:

1 Consola de iluminación tipo ETC ION, GrandMA o similar

Accesorios necesarios:

6 portagobos para ETC tamaño A.

6 gobos Ref Rosco 76610 Crazy Paving. Tamaño A.

4 bases de piso



Es necesario proveer todo el cableado DMX y de corriente en cantidades de acuerdo con el plano y asegurar que los aparatos se encuentren en buen estado de mantenimiento.

CONVENCIONES

- Elipsoidal ETC 19° 750w (6)
- Elipsoidal ETC 36° 750W con portagobo (6)
- Par Led QUAD 18x10w rgbw 20° (12)
- Par Led ZOOM QUAD 18x10w rgbw (2)
- Cabeza Móvil Chauvet Rogue R2 Spot (6)
- Fresnel 6" 750w (2)
- Máquina de niebla Jem k1 (1)

If you have a different lighting design, please share it with our designer, as far in advance as possible, with the information available on:

- Lighting plan
- Patch List
- Console (brand, reference and software version)
- Showfile

Contact for lighting matters:

Andrés Garzón - visual designer and lighting assistant
 Mail: andresgrzn@gmail.com / Cel: +57 315 6826121.

HOSPITALITY RIDER 2024

CREW

4 to 7 people traveling, depending on the type of show

**Please contact Las Áñez or their booker to confirm the number of members of the crew for this specific show.*

Usually:

- 4 members: 2 singers + Staff (FOH/Stage)
- 5 members: 2 singers + Staff (FOH/Stage/Lights)
- 6 to 7 members for large venues and open-air festivals

FLIGHTS

- **2 or 3** flight tickets of an airline that admits **musical instruments in the cabin (137 cm in total) + minimum 20 kilogram luggage in hold.**
- **1** flight ticket with minimum **20 kilogram luggage in hold + hand luggage.**
- **1** flight ticket with **hand luggage + bag.**

PREVIOUS INFO

At least two weeks before the show:

**If possible, c.c to all contacts bellow*

- **Show's duration.** Las Áñez provide the confirmed Sound Technical Rider depending on the duration needed for the concert. See an example of a full Sound Rider here: www.lasanez.com/contact
- **Sound-check** time and length confirmation:
**to start ideally 2:30 hours before Doors Open.*
- **Contact** of the person in charge of **technical aspects to confirm:**
 - **Technical document** for sound and others
 - Lighting and sound producer contact
 - Possibility of projecting visuals
- **Contact** of the person in charge of the **logistics to confirm:**

- Indoor or outdoor stage	- Address of artist's access to the venue
- Other artists on stage	- Catering arrival time
- Merchandising information	- Free passes provided to the artist
- Private or public	- Name and address of the hotel
- Venue's capacity	- Direct transportation phone number
- Permission of photographing and filming	

ACCOMODATION

- **Hotel** rated 3 stars or above.
**Try to arrange an early check-in when necessary.*
- **Single rooms** for each member of the crew with a private bathroom.
When single rooms aren't available, maximum 2 people per room.
- **Breakfast** to be provided at the hotel or very close by walk.

TRANSPORTATION

Ground transportation (small van or 2 cars with trunk) for all members plus luggage and equipment, for this journeys:

- Airport-Hotel-Airport.
- Hotel-Venue-Hotel (1 or 2 times depending on the time of soundcheck).

Provide more than 1 journey if arrival times of the crew are different.

_____DRESSING ROOM_____

- 2 or more private full equipped **toilets**
- **Security**
- Heating system if necessary

_____CATERING_____

- Salty and sweet fresh food (also warm if possible).
**One of the members can Not eat dairy, red nor pork meat.*
- **Water for all members** of the crew in dressing room and backstage.
- **Additional room-temperature water for both singers** on stage.
- **Hot water** in dressing room (for cold weather and open-air shows).

**If possible, please avoid using lots of disposable plastic/icomor bottles/glasses.*

_____CONTACT FOR HOSPITALITY_____

- BOOKING AGENCY BICHE for some cases: produccionbiche@gmail.com,
alejandra@biche.com.co / +57 315 3045545
- ARTISTS: agnez89@hotmail.com / +573173000405